

www.saidina.com.my



pegaso



pegaso

There's a lot of work to be done, so when it comes to comfort, you just gotta have it.



a Inner Seat

PU moulded foam is attached to the bottom polypropylene cover without the usage of metal plate bracket with nuts.

b Armrest

Nylon adjustable armrest with nylon ampad to enhance support with best comfort.

c 5 Pronged Base

Nylon high base that comes with 60mm polyurethane castors.



UNCHALLENGED LUXURY

Tastefully crafted, the Pegaso collections is for those who truly understand what true luxury means. With this in mind, the complete seating solution will gratify any seating connoisseur with its quality and supreme practicality.

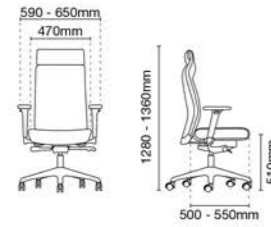


LEATHER SERIES



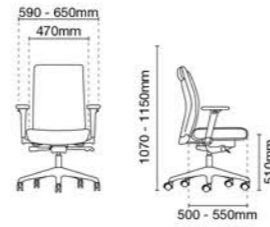
PG5110L-10D90
Presidential high back

- AB10 aluminium high base
- D90 4D nylon adjustable armrest
- MH024S self-weight adjustment synchronized mechanism with seat slide (multi-locking)



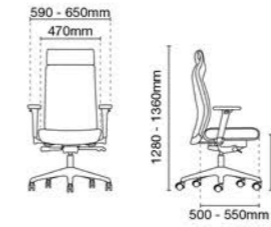
PG5111L-10D90
Presidential medium back

- AB10 aluminium high base
- D90 4D nylon adjustable armrest
- MH024S self-weight adjustment synchronized mechanism with seat slide (multi-locking)



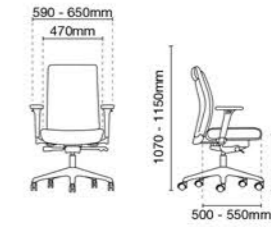
PG5110F-20D90
Presidential high back

- NB20 nylon high base
- D90 4D nylon adjustable armrest
- MH024S self-weight adjustment synchronized mechanism with seat slide (multi-locking)



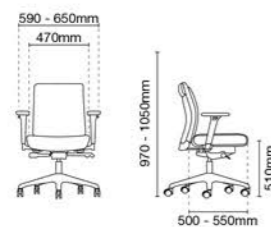
PG5111F-20D90
Presidential medium back

- NB20 nylon high base
- D90 4D nylon adjustable armrest
- MH024S self-weight adjustment synchronized mechanism with seat slide (multi-locking)



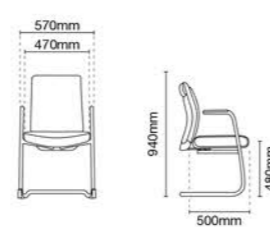
PG5112L-10D90
Executive low back

- AB10 aluminium high base
- D90 4D nylon adjustable armrest
- MH024S self-weight adjustment synchronized mechanism with seat slide (multi-locking)



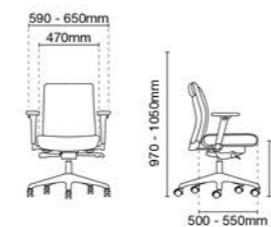
PG5113L-89CA
Visitor / Conference chair with arm

- 89CA chrome cantilever base



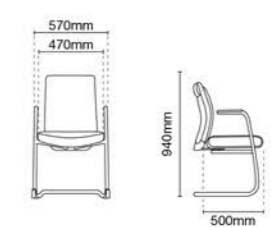
PG5112F-20D90
Executive low back

- NB20 nylon high base
- D90 4D nylon adjustable armrest
- MH024S self-weight adjustment synchronized mechanism with seat slide (multi-locking)

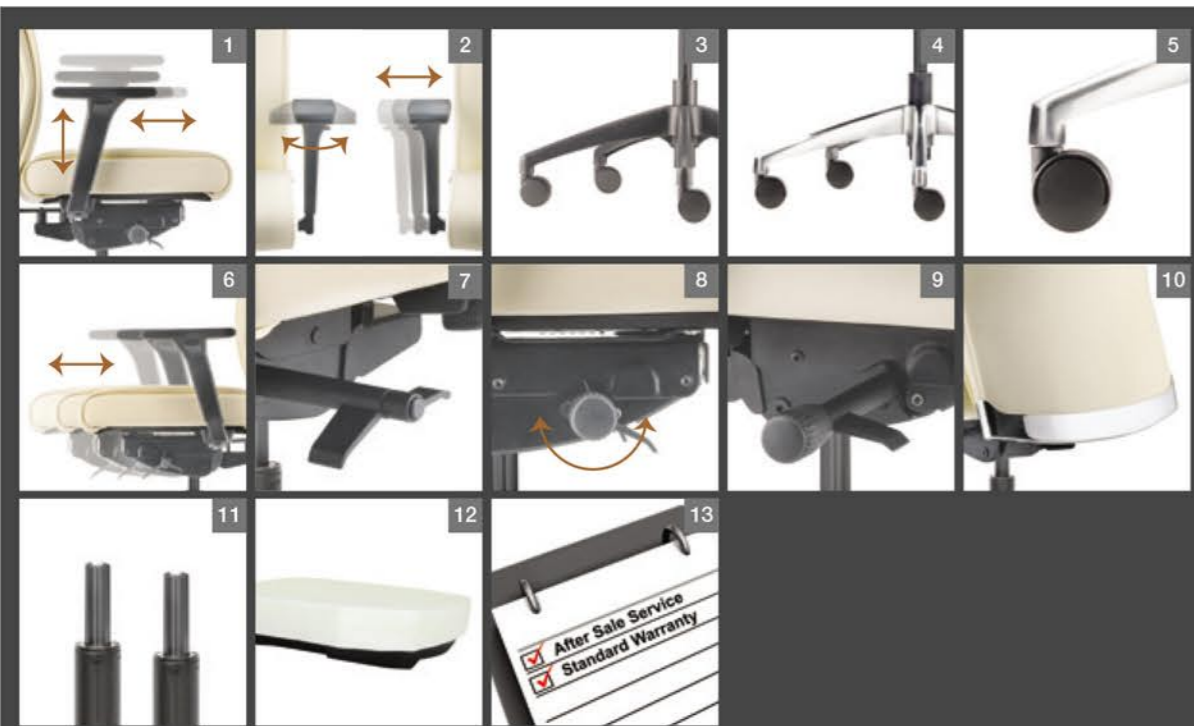


PG5113F-89EA
Visitor / Conference chair with arm

- 89EA epoxy cantilever base



OPTIONAL SPECIFICATION



4D Nylon Adjustable Armrest

Nylon adjustable armrest with nylon armpad to enhance support with best comfort. (Pic 1, 2)

5 Pronged Base

5 pronged base in either nylon or die-cast polished aluminium finish, generates by highly sophisticated ambience to provide strong stability. (Pic 3, 4)

Nylon Castors

60mm nylon dual-wheel castors are designed for smooth gliding and also reduce floor scratches. (Pic 5)

Adjustable Seat Depth / Slider Mechanism

Using a simple lever under the seat, user can easily adjust the depth of the seating to accommodate his sitting preference and comfort. (Pic 6, 7)

Self-Weight Tilting Mechanism

Self-weight adjustment synchronized mechanism with 3 tensions level adjustable knob and multi-locking system designed to adapt your body weight automatically. (Pic 8,9)

Capping Finishing

Strip capping with chrome finish located at the bottom of the chair backrest enhances quality upholstery while adding elegant design to the contours of the backrest. (Pic 10)

Height Adjustable Pneumatic Cylinder

Imported heavy duty pneumatic cylinder designed with safety and durability features, allows for height adjustment of the chair to suit each users physique. (Pic 11)

Polyurethane Moulded Foam

High density polyurethane moulded foam come with fire retardant feature, gives the seat flexibility to conform user seating posture, provides great support and best comfort even for long seating hours. The black finish seat cover below is designed for greater protection to the foam, quality upholstery and user safety. (Pic 12)